

Miami, August 26, 2022

ENGINE INSPECTION PROCESS

ENGINE TYPE: **LF 507-1F** SERIAL NUMBER: **LF07601** AIRCRAFT: **AVRO RJ-85**

PERFORMED BOROSCOPE INSPECTION IAW EMM 507.1

INSPECTION ENGINE AREA:

- 1- LPC INSPECTION/CHECK-01** Inspection of the LPC Section (Subtask 72-00-00-200-004-01-A01) **(WITHOUT DISCREPANCIE)**

- 2- HPC** HPC1 disc and blade root areas. Refer to INSPECTION/CHECK-01 (PGBLK 72-00-00-8000) **(WITHOUT DISCREPANCIE)**

- 3- HPT** Diffuser curl assembly. Refer to 72-00-00, Inspection/Check-01
Second turbine nozzle. Refer to 72-00-00, Inspection/Check-01
First turbine nozzle. Refer to 72-00-00, Inspection/Check-01
(WITHOUT DISCREPANCIE)

- 4- COMBUSTION SECTION** Combustion chamber liner. Refer to 72-00-00, Inspection/Check-01 **(WITHOUT DISCREPANCIE)**

- 5- LOW PRESSURE TURBINE INSPECTION/CHECK-01** Inspection of the LPT Section (Subtask 72-00-00-200-006-01-A01) **(WITHOUT DISCREPANCIE)**

- 6- MOTOR COMPRESSOR WITH FREE ROTATION.**

CONCLUSION: ENGINE WITHOUT DISCREPANCY



ENGINE



PLATE



FORWARD



REAR

ENGINE BOROSCOPE PHOTOS

1- LOW PRESSURE COMPRESSOR (LPC)

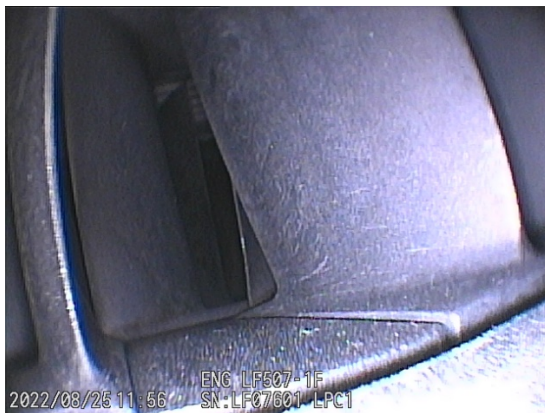
FAN



LPC BLADE 1



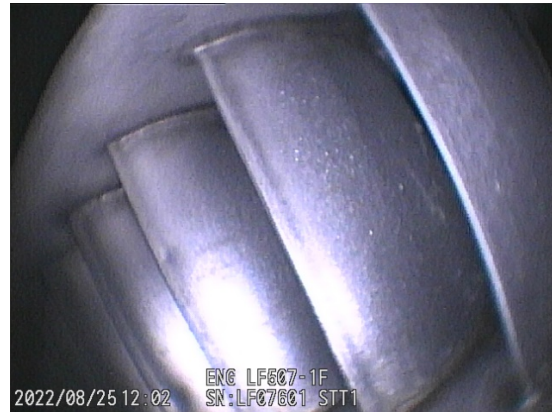
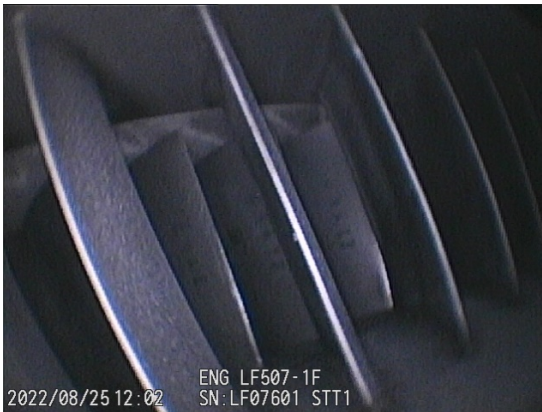
LPC 1 ROOT



LPC BLADE 2



LPC STATOR 1



LPC STATOR 2



2- HIGH PRESSURE COMPRESSOR (HPC)

HPC BLADE 1



HPC 1 ROOT



HPC BLADE 2



HPC STATOR 1



3- HIGH PRESSURE TURBINE (HPT)

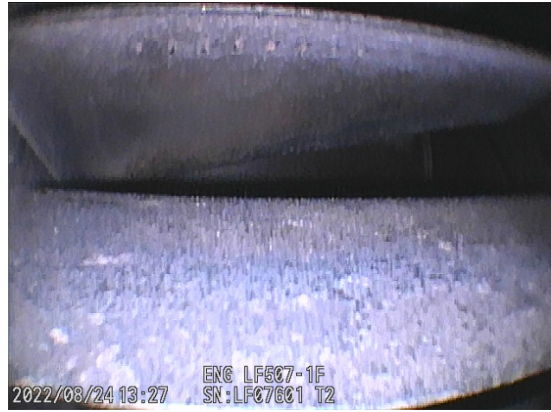
HPT BLADE T1



HPT BLADE T1



HPT BLADE T2



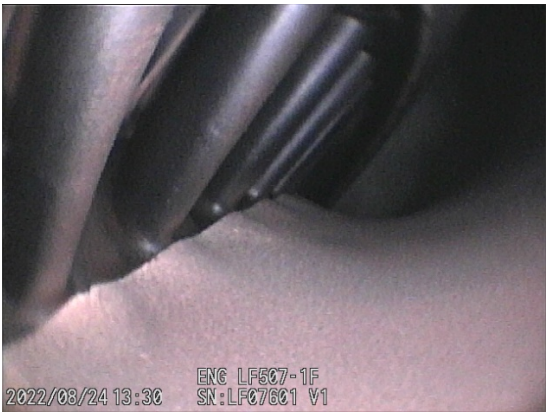
HPT BLADE T2



HPT VANE 1



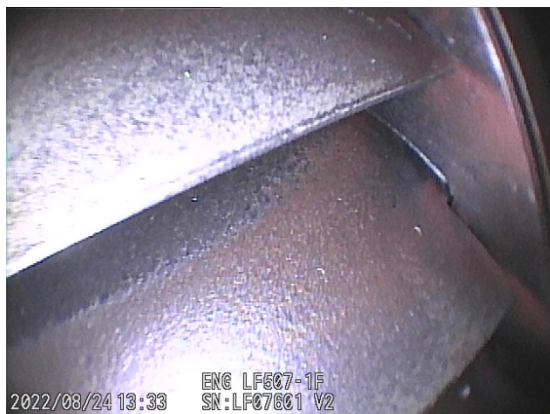
HPT VANE 1



HPT VANE 2

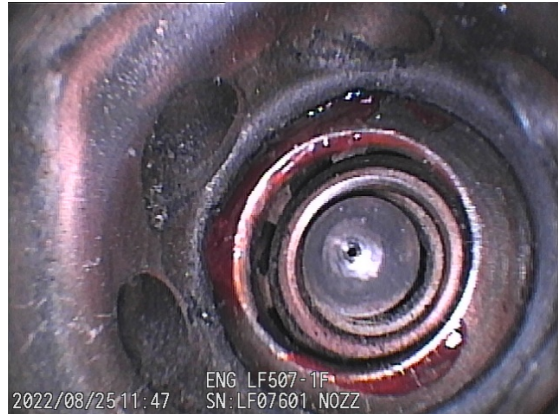
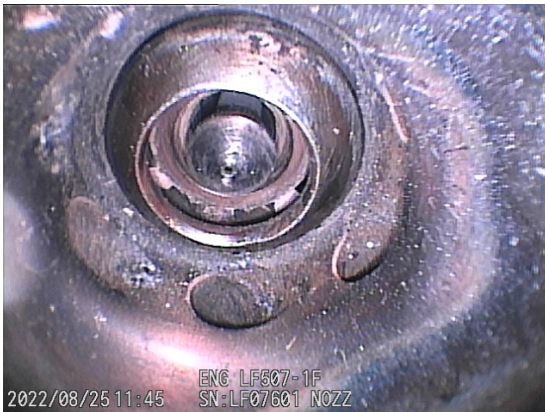


HPT VANE 2

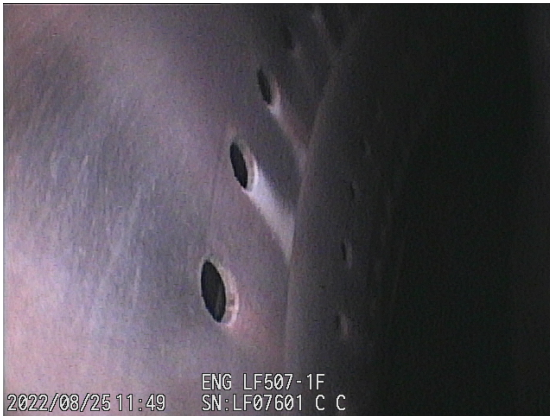


4- COMBUSTION SECTION

FUEL NOZZLE



COMBUSTION CHAMBER



5- LOW PRESSURE TURBINE

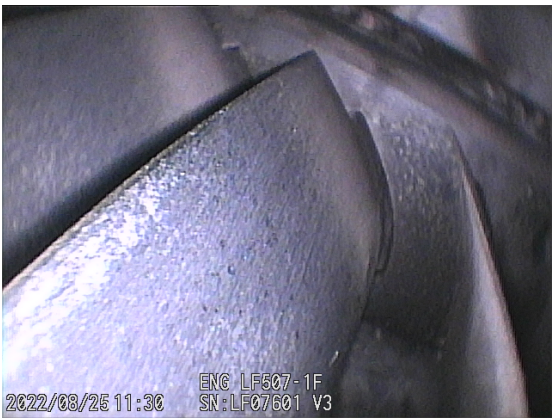
LPT BLADE T3



LPT BLADE T4



LPT VANE T3



LPT VANE T4

